



When you want to **protect** what's important

Product highlights

Designed for smaller, single-location installations

Supports up to **48 cameras**

Choose from **more than 6,000 cameras** from more than 100 manufacturers

Single-layer, interactive map provides a complete overview of the entire system with camera locations

Hide areas in the camera view that must not be visible or recorded with **privacy masks**

Record only when something happens with built-in **video motion detection**

Add extra functionality for a complete solution

Supports **third-party integrations and Milestone add-on products**

Combine with **XProtect Transact** to create a retail solution where video recordings help grow your bottom line

Use **XProtect Access** to integrate video with your access control system to easily verify visitor details

Browse the **Milestone Solution Finder** to find third-party solutions such as video analytics, facial recognition and perimeter protection

Access anytime, anywhere

Three free clients provides access on-site, off-site and on the go

XProtect Smart Client is a powerful interface for daily operations with sophisticated tools for finding and exporting evidence material

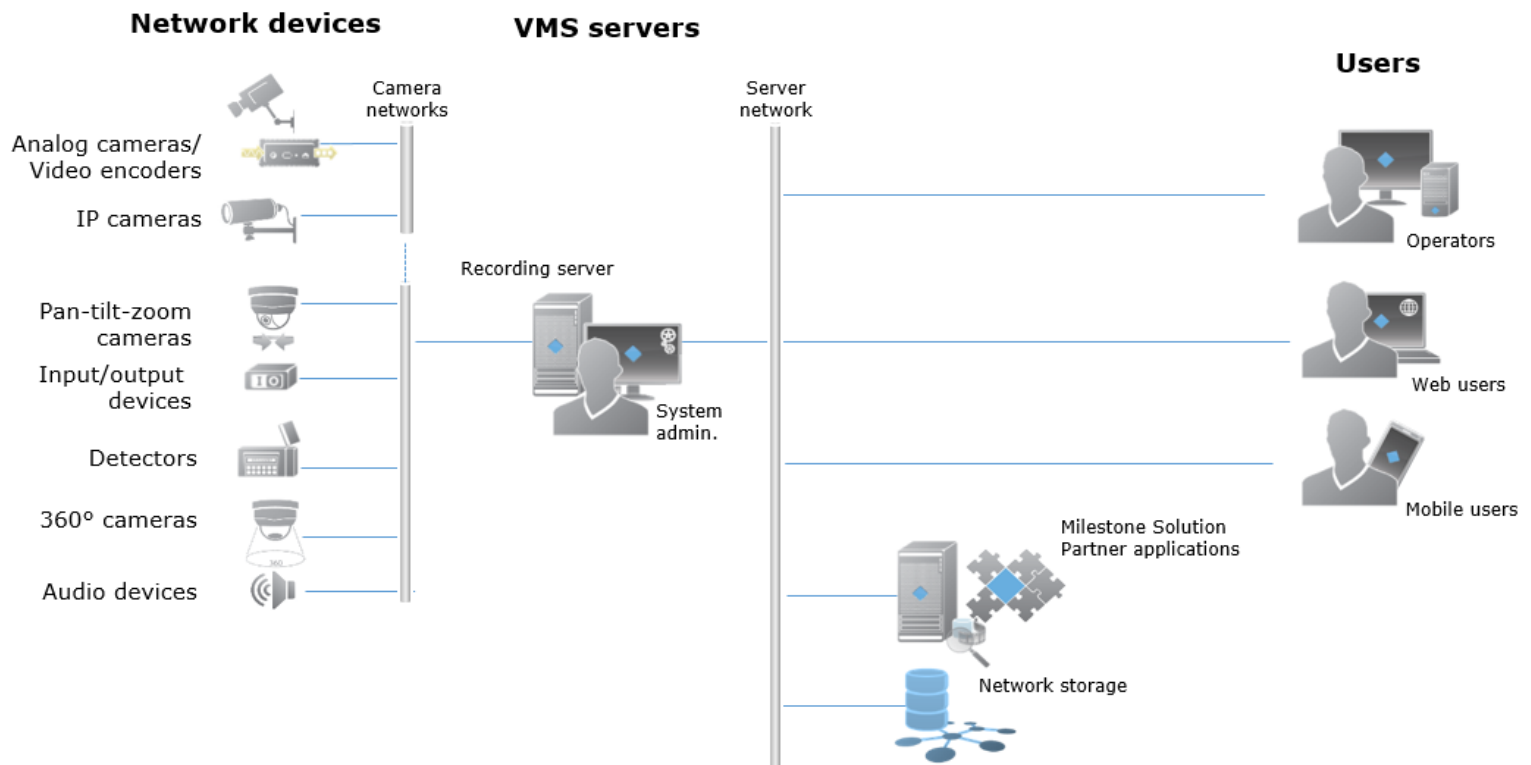
Milestone Mobile gives ultimate peace of mind with access to the system from anywhere

With **push notifications** sent directly to your mobile, you always know when something needs your attention

XProtect Web Client enables you to connect anywhere through browsers

SKU	Description
XPEXBL	XProtect Express base license
XPEXCL	XProtect Express device license
YXPEXCL	1-year Care Plus for device license

System diagram



MANAGEMENT APPLICATION

A single management interface provides a single point of access to the Recording Server, Mobile server and Event server. System configuration wizards help add cameras, configure video and recording, adjust motion detection and configure multiple users.

EVENT SERVER

Provides a single-layer map giving operators interactive access and control of the complete surveillance system. It hosts features for the alarm function and any third-party solution plug-ins.

MOBILE SERVER

Runs as a dedicated service so it can be installed with an existing installation.

Specifications

General	Detail
Type of deployment	Single site
Licensing	Perpetual
Maximum number of cameras	48
Maximum number of recording servers	1
Maximum number of concurrent users	5
Customer Dashboard	Yes, with Care Plus
Multiple video export formats	Yes
Supports all XProtect clients	Yes
Alarm Manager	Yes
Map function	Yes
Push notification	Yes, with Care Plus
Smart Start setup wizards	Yes

Scalability	Detail
Milestone Interconnect	Remote site
Supports third-party system integration	Yes
Supports XProtect add-on products	Yes

Cybersecurity	Detail
Secure HTTPS camera connectivity	Yes
Digital signature on video exports	Yes
Disablement of re-exporting	Yes
Dual authorization	Yes